



## Joint Task Force National Capital Region Medical



## Agenda



- JTF CapMed Overview
- NCR Clinical BRAC Overview
- Comprehensive Master Plan Overview
- Questions



## JTF CapMed Establishment



- **14 SEP 07 - JTF CAPMED established**
- **01 OCT 07 - Initial Operational Capability (IOC)**
- **30 SEP 08 - Full Operational Capability (FOC)**
- **Fully functional Standing Joint Task Force reporting directly to the SECDEF through the DEPSECDEF**
- **Commander O-9 Medical Officer**
  - Responsible under Section 601 of Title 10, US Code
  - Acts as senior medical officer in the JOA with responsibility for military healthcare in the NCR

Source Document: DEPSECDEF's Establishing Authority for JTF CapMed and JTF CapMed Transition Team memo dtd 12SEP07

3



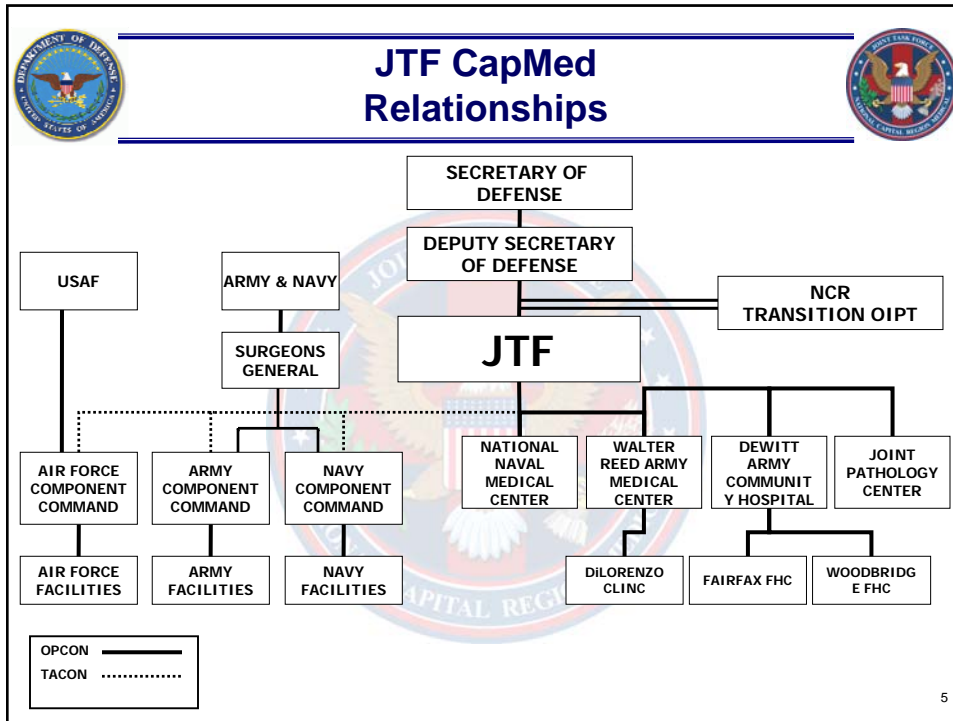
## JTF CapMed Mission and Authorities



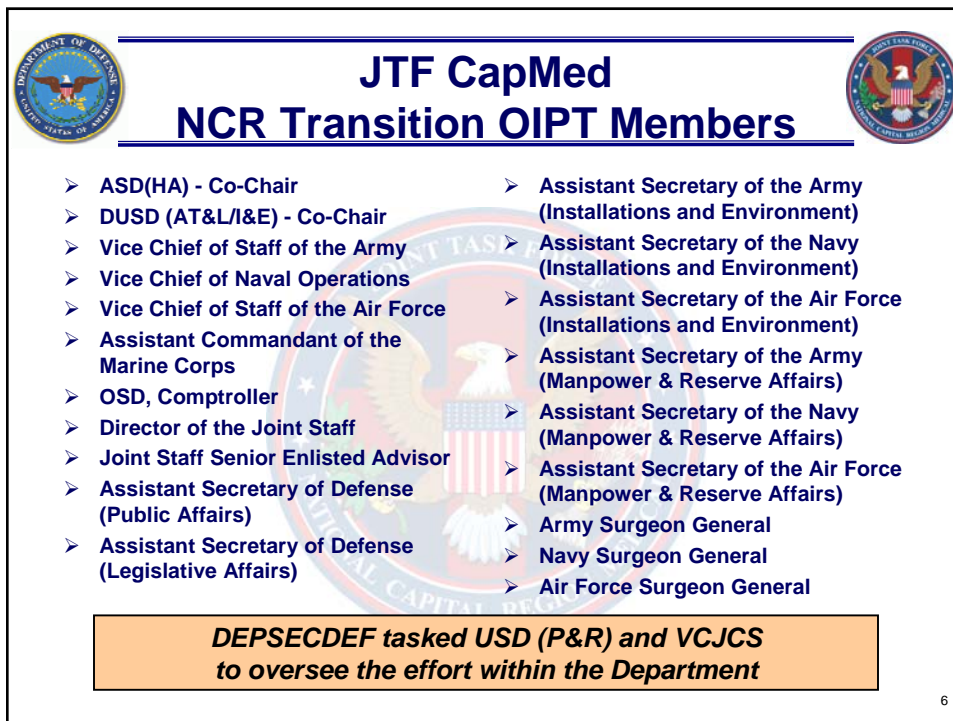
- **Oversee, manage, and direct all health care delivery by military medical units within the Joint Operations Area (JOA) and ensure the military medical readiness of personnel in the JOA.**
- **Develop a Joint NCR Transition plan and oversee BRAC implementation and related military construction projects.**
- **Coordinate the scheduling and funding of clinical and non-clinical work with Services, MHS BRAC Program Integration Office, US Army Corps of Engineers and NAVFAC.**
- **Oversee, manage, and distribute resources to military health care assets within the JOA.**
- **Develop and maintain interagency and private partnerships.**
- **Other tasks as assigned.**

Source Document: DEPSECDEF's Establishing Authority for JTF CapMed and JTF CapMed Transition Team memo dtd 12SEP07

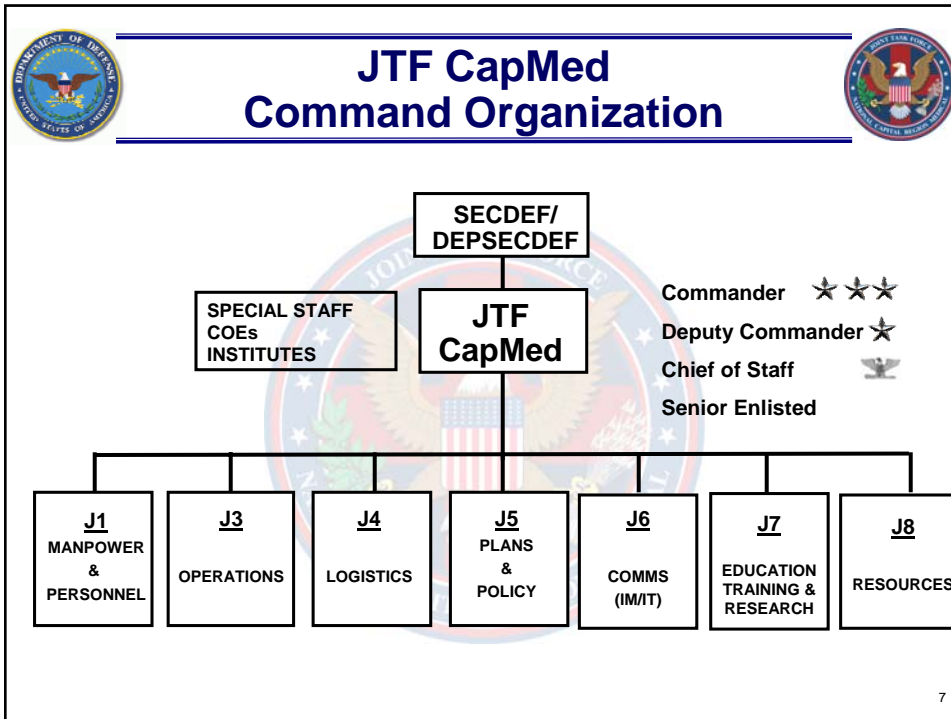
4



5



6



**JTF CapMed Staff Summary**

**Staff Distribution:**

- Command: 4
- Personal Staff: 12
- Special Staff: 4
- Functional Staff:
  - J1: 15
  - J3: 47
  - J4: 13
  - J5: 29
  - J6: 11
  - J7: 7
  - J8: 10

**PERS Allocations:**

- 63 military (41%)
  - 14 Air Force
  - 16 Army
  - 16 Navy
  - 17 Nominative
- 86 civilian (57%)
- 3 contractors (2%)

**Total: 152**

8



## JTF CapMed Assigned Forces



### Army Component CDR: MGEN Hawley-Bowland

\*Walter Reed Army Medical Center, Washington, DC

\*DeWitt ACH, FT Belvoir, VA

Andrew/Rader FHC, FT Meyer, VA

AP Hill AHC, Bowling Green, VA

Fairfax FHC, Fairfax, VA

Woodbridge FHC, Woodbridge, VA

Kimbrough AHC, FT Mead, MD

Barquist AHC, FT Detrick, MD

Dunham AHC, Carlisle, PA

Defense Distribution Center AHC, New Cumberland, PA

FT Indiantown Gap AHC, Annville, PA

Letterkenny Army Depot AHC, Chambersburg, PA

Kirk AHC, Aberdeen Proving Ground, MD

Edgewood OHC, Edgewood, MD

Troop Medical Clinic, Aberdeen, MD

McNair AHC, Washington, DC

Pentagon HC, Arlington, VA (DiLorenzo)

Tri-Serv Dental Clinic, Pentagon (DiLorenzo)

### Navy Component CDR: RADM Nathan

\*National Naval Medical Center, Bethesda, MD

BHC Carderock, Anacostia, MD

BHC/DC Dahlgren, VA

BHC/DC Earle, Colts Neck, NJ

BHC/DC Indian Head, MD

BHC/DC Lakehurst, Lakehurst, NJ

BHC Mechanicsburg, PA

BHC/DC NAF Washington, DC

BHC NRL, Washington, DC

BHC Philadelphia Naval Bus Ctr, PA

BHC/DC Sugar Grove, WV

BHC/DC Washington Navy Yard, DC

BHC/DC Willow Grove, PA

NHC Annapolis, MD

BHC Bancroft Hall

NHC Pax River, Patuxent River, MD

NHC Quantico, Quantico, VA

BHC Basic School

BHC OCS Brown Field

### Air Force Component CDR: MAJ GEN Graham

79<sup>th</sup> MDW, Andrews AFB, MD

779<sup>th</sup> MDG, Andrews AFB, MD

579<sup>th</sup> MDG, Bolling AFB, DC

AF Flight Medicine Clinic, Pentagon

\*JTF CapMed Operational Control

Source Document: DEPSECDEF's Establishing Authority for JTF CapMed and JTF CapMed Transition Team memo dtd 12SEP07

9



## JTF CapMed JOA Profile



- 550K Eligible Beneficiaries
- 284K MTF Enrollees
- 3.1M MTF RVUs
- 108K MTF Bed-days
- 24K MTF Dispositions
- 27K MTF RWPs
- \$1.3B MTF Budget
- 12K Military and GS employees
- \$588M Purchased Care

10



## Support to NORTHCOM & JTF NCR



### ➤ Plans

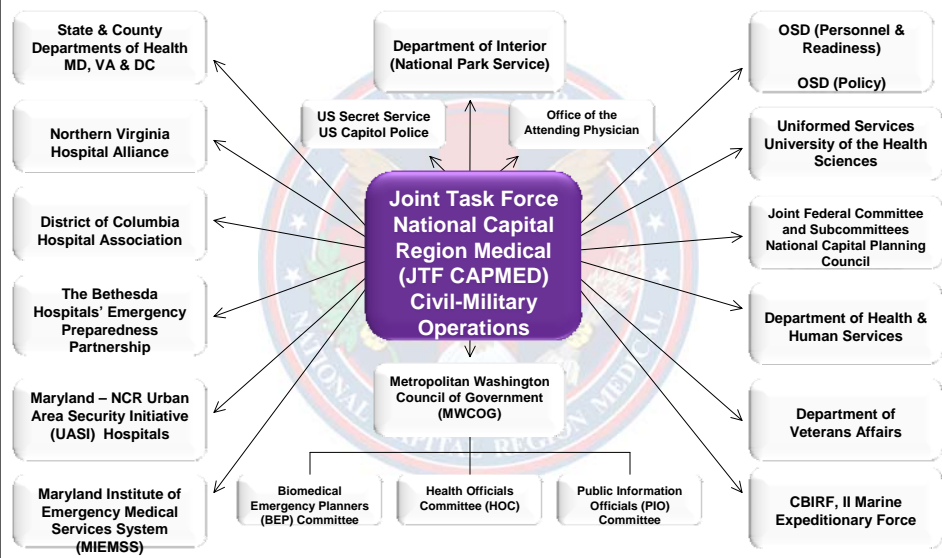
- SUPPLAN 3400 Homeland Defense
- SUPPLAN 3500 CBRNE Consequence Management
- SUPPLAN 3502 Civil Disturbance Operations
- SUPPLAN 3591 Pandemic Influenza
- SUPPLAN 3600 Emergency Preparedness in the NCR
- State Funeral Plan
- Continuity of Operations Plan

### ➤ Medical Functional Component for JTF NCR



## Interagency Partnership

Existing Lines of Communication with External Organizations





## JTF CapMed Commander's Priorities



- Casualty Care
- Caring for the Caregiver
- “Be Ready Now”
- Regional Healthcare Delivery
- Common Standards and Processes

13



## NCR BRAC



### Walter Reed National Military Medical Center



### Fort Belvoir Community Hospital



14



## BRAC is an Opportunity



- BRAC rationalizes and recapitalizes NCR medical facilities
  - Closes the aging Walter Reed Army Medical Center (WRAMC) facility and inpatient capabilities at Malcolm Grow Medical Center (MGMC), realigns functions to:
    - Establish world-class medical center at Bethesda (renaming it Walter Reed National Military Medical Center)
    - A new, larger, Fort Belvoir medical facility serving the military demographic that has shifted south (Fort Belvoir Community Hospital)
  - Realigns the bed structure in the NCR to best meet the needs of the patient population

Care for Wounded Warriors Is Top Priority

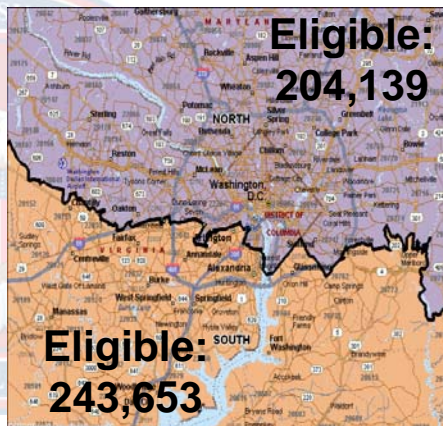


## Methodology Used for Joint Service NCR Clinical BRAC Planning

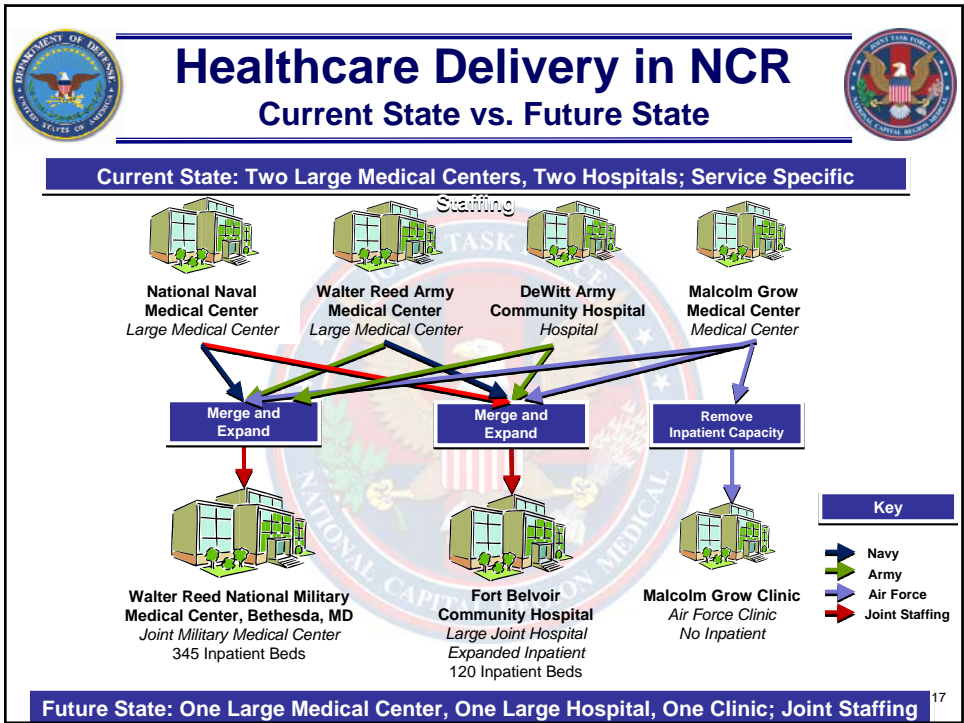


- Divided NCR into North and South based on distance/drive time to Bethesda and Fort Belvoir
- Pulled data (visits, admits, RVUs/RWPs) for NNMC, WRAMC, and Fort Belvoir based on geographic distribution (patients home zip code)
- Redistributed South “tertiary care” workload to the North based on a combination of qualitative and quantitative clinical service data and input
- Approximately 20% of South-generated inpatient activity (13% Ambulatory care) is subspecialty tertiary care and will migrate to the North

### North and South Markets

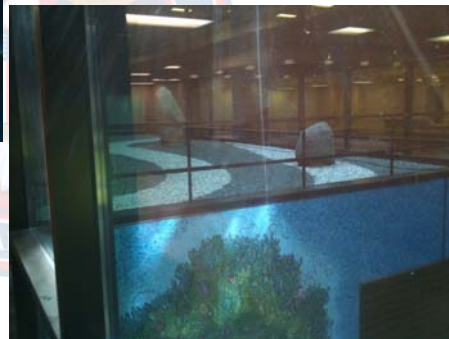


Objective: Alignment of MTFs to achieve an Integrated Delivery System





## Walter Reed National Military Medical Center



19



## New Capabilities at WRNMMC



- **Vision Centers of Excellence**
- **National Intrepid Center of Excellence**
- **Level I Trauma Care**
- **Consolidated Cancer Center**
  - Gynecological Oncology
  - Prostate Oncology
  - Breast Cancer
  - Medical Oncology
  - Surgical Oncology
- **Comprehensive Warrior Transition Support Services**
- **Joint Pathology Center**

20



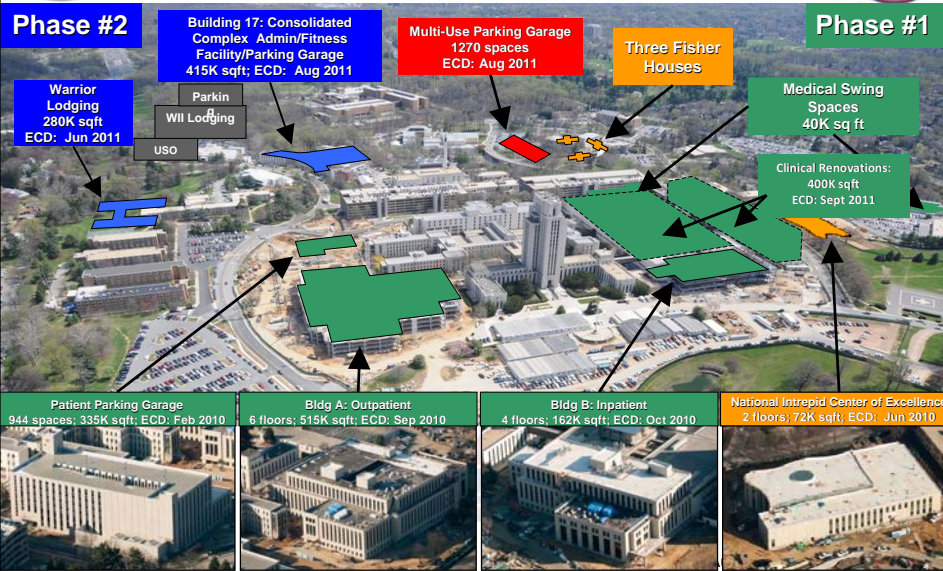
## National Intrepid Center of Excellence (Artist's Rendering)




- 75,000 square foot, two-story facility being built next to new WRNMMC
- Advanced diagnostics, initial treatment plan and family education, introduction to therapeutic modalities
- Provides referral and reintegration support for military personnel and veterans with TBI, post traumatic stress disorder, and/or complex psychological health issues




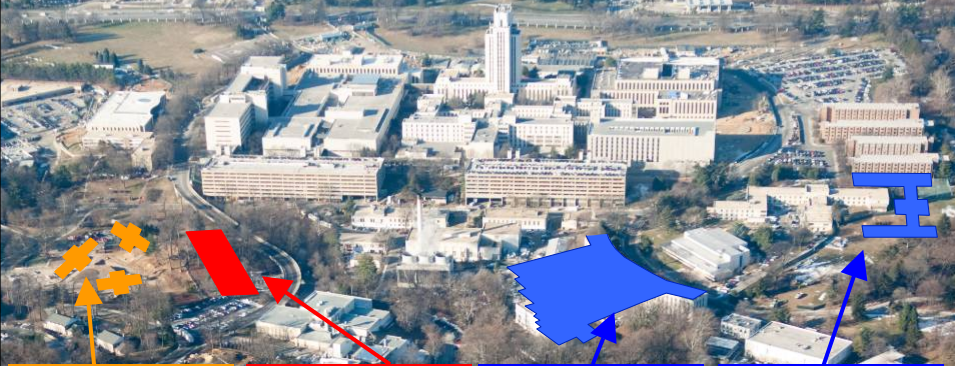
## WRNMMC Campus Profile










## Support Facility Construction Underway





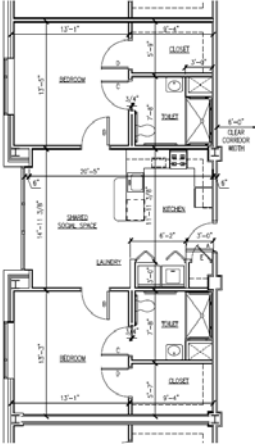



<p><b>Three Fisher Houses</b> ECD: TBD</p> 	<p><b>Multi-Use Parking Structure</b> 10 floors; 1200 spaces; ECD: Aug 2011</p> 	<p><b>Building 17: Consolidated Complex</b> 4 floors; 415K sqft; ECD: August 2011</p> 	<p><b>Building 62: Barracks/Dining/Admin</b> 8 floors; 295K sqft; ECD: June 2011</p> 
--	---	--	--



## WII Lodging and Admin Complex





ENHANCED APARTMENT PLAN



## Admin, Gym and Parking Complex



25



## Fort Belvoir Community Hospital



- 120 Inpatient Beds
- 1.275 M GSF Hospital Complex
- Central Utility Plant (CUP)
- Helipad/ Ambulance Shelter
- 3500 Parking Spaces



26



## New Capabilities at FBCH

- Adult Oncology Services
- Radiation Oncology
- Intensive Care Unit
- Inpatient Behavioral Health
- Inpatient Pediatric
- Breast Center
- Nuclear Medicine
- Laser Eye Center
- Oral Surgery
- Chiropractic Services
- Pain Clinic
- Rheumatology
- Comprehensive Warrior Transition Support Services
- Vascular
- Cardiac Catheter Lab
- Neurology
- Endocrinology
- Pulmonary Clinic
- Patient Resource Library
- Infectious Disease Clinic
- Interventional Radiology
- VA Health Clinic
- Executive Medicine Clinic
- Residential Substance Abuse Treatment
- Multidisciplinary Interventional Services

**Evidence Based Design (EBD)**



## Fort Belvoir Community Hospital Construction Photo and Key

**S. Garage (Jul 2010)**

**Clinic E (Jul 2010)**

**Clinic D (Nov 2010)**

**Building C (June 2011)**

**Clinic B (Sep 2010)**

**Clinic A (Jun 2010)**

**N. Garage (Aug 2010)**

**Key:**

- South Clinics D & E:** -2 Stories, 3 Stories -275,528 SF -152 Exam Rms
- Hospital C:** -7 Story Tower -722,838 SF -120 beds -10 OR suites -30 ER exams
- North Clinics A&B:** -3 Stories/2 Stories -276,850 SF -193 Exam Rms
- South Garage:** Approx. 1,650 Spaces
- North Garage:** Approx. 1,380 Spaces
- Approximately 400 Parking Spaces**



# Fort Belvoir Community Hospital Construction



# Fort Belvoir Community Hospital Construction





## Fort Belvoir WTU Complex Barracks, Admin Area, SFAC



29



## Care for Wounded, Ill and Injured Service Members



- **Warriors will remain at WRAMC until recovery, support, and management services at WRNMMC and FBCH are in place**
- **Bethesda will have sufficient Americans with Disabilities Act (ADA) lodging to support 350 of the most severely injured casualties including all amputees, open traumatic brain injury, and complex trauma cases as well as 150 NMAs**
- **Both Bethesda and Fort Belvoir will have new facilities to provide warrior transition services such as an ADA compliant fitness center, dining facility, resident support center, and administrative functions**
- **JTF CapMed is developing integrated WRNMMC CONOPS for Wounded Warriors support, to include: Medical Regulation, WII programs, and military service specific requirements**
- **War Game 17-18 August 2010**

32



## WII Beds in the NCR (On/Off-base) by Location



WRAMC					Bethesda				
Occupant Data	WII (On-base)	NMA (On-base)	WII (Off-base)	NMA (Off-base)	Occupant Data	WII (On-base)	NMA (On-base)	WII (Off-base)	NMA (Off-base)
Delano Hall	27	18	N/A	N/A	Mercy Hall	51	N/A	N/A	N/A
Abrams Hall (Barracks)	250	N/A	N/A	N/A	Solace Hall	N/A	N/A	N/A	N/A
Doss Memorial	13	8	N/A	N/A	Comfort Hall	N/A	N/A	N/A	N/A
Mologne House	150	98	N/A	N/A	Navy Lodge	N/A	2	N/A	N/A
Fisher House 1	2	N/A	N/A	N/A	Fisher House 1	N/A	N/A	N/A	N/A
Fisher House 2	5	N/A	N/A	N/A	Fisher House 2	N/A	N/A	N/A	N/A
Fisher House 3	1	N/A	N/A	N/A	Off-Post Family Lodging	N/A	N/A	N/A	N/A
Off-Post Family Lodging	N/A	N/A	41	30	Off-Post Family Housing	N/A	N/A	85	N/A
Off-Post Family Housing	N/A	N/A	100	N/A	<b>Total Occupants*</b>	<b>51</b>	<b>2</b>	<b>85</b>	<b>0</b>
<b>Total Occupants</b>	<b>448</b>	<b>124</b>	<b>141</b>	<b>30</b>					

Fort Belvoir					Fort Meade				
Occupant Data	WII (On-base)	NMA (On-base)	WII (Off-base)	NMA (Off-base)	Occupant Data	WII (On-base)	NMA (On-base)	WII (Off-base)	NMA (Off-base)
MCREE Barracks	49	N/A	N/A	N/A	Barracks	98	N/A	N/A	0
The Fort Belvoir Lodge	9	N/A	N/A	N/A	On-Post Lodging	12	2	N/A	N/A
On-Post Family Housing	8	N/A	N/A	N/A	On-Post Family Housing	17	N/A	N/A	N/A
Off-Post Family Housing	0	N/A	82	N/A	Off-Post Family Housing	N/A	N/A	65	N/A
<b>Total Occupants</b>	<b>66</b>	<b>0</b>	<b>82</b>	<b>0</b>	<b>Total Occupants</b>	<b>127</b>	<b>2</b>	<b>65</b>	<b>0</b>

ALL - Wounded, Ill and Injured (WII)				ALL - Non-Medical Attendants (NMA)			
Occupant Data (on-base)	WII (On)	WII (Off)	Total	Occupant Data (on-base)	NMA (On)	NMA (Off)	Total
WRAMC	448	141	589	WRAMC	124	30	154
Bethesda	51	85	136	Bethesda	2	0	2
Fort Belvoir	66	82	148	Fort Belvoir	2	0	2
Fort Meade	127	65	192	Andrews (AF)	3	0	3
Andrews	0	9	9	Fort Meade	0	0	0
<b>Total WII Occupants</b>	<b>692</b>	<b>382</b>	<b>1074</b>	<b>Total NMA Occupants</b>	<b>131</b>	<b>30</b>	<b>161</b>

As of 26 July 2010  
 Total WII + NMA (1,074 + 161) = 1,235

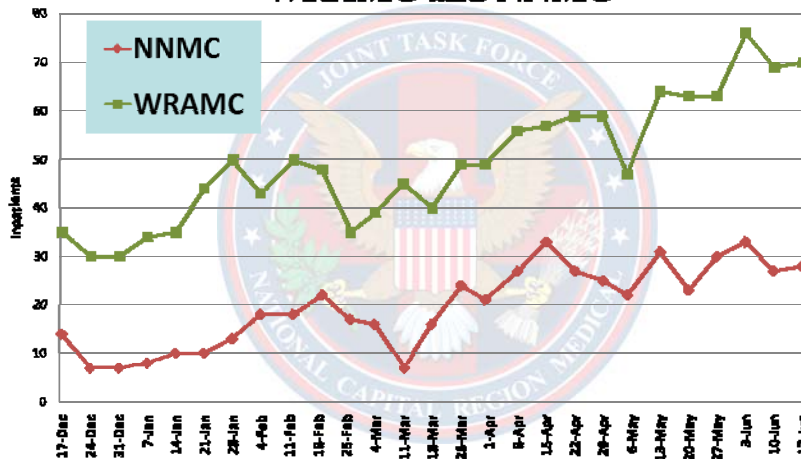
Data Sources: WRAMC WTB, NSA Bethesda, WTU Fort Belvoir, Service Representatives

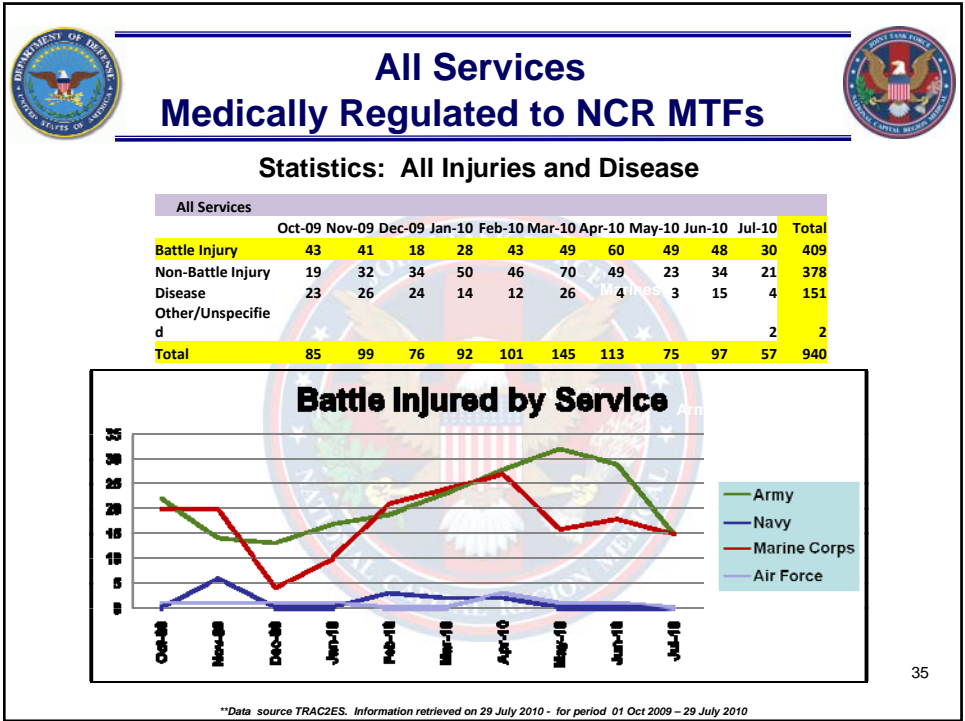


## NCR WARRIOR INPATIENT CENSUS

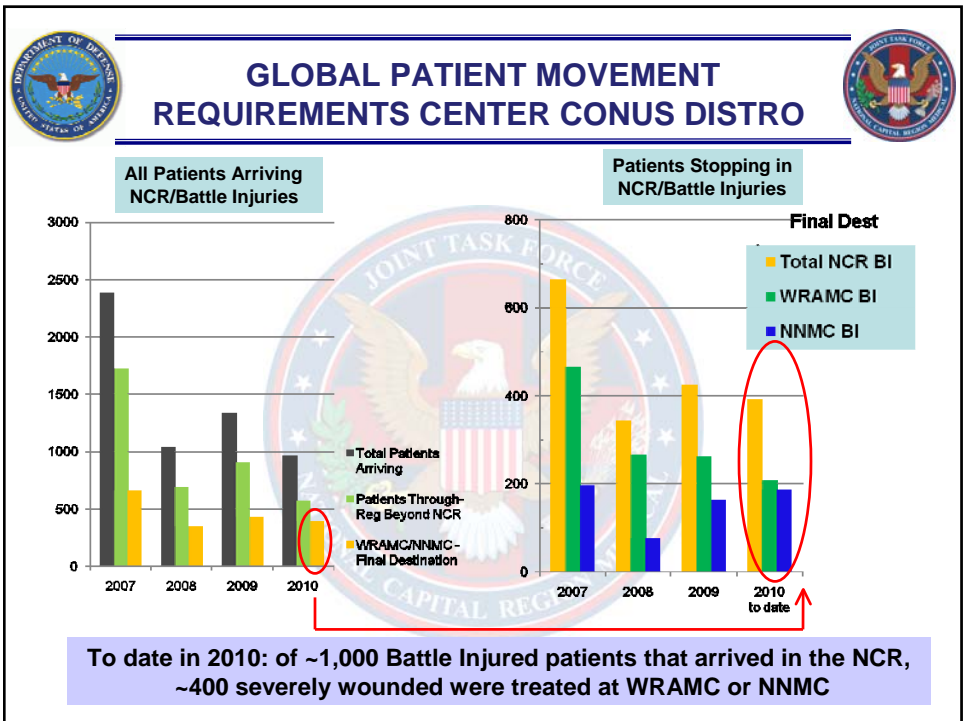


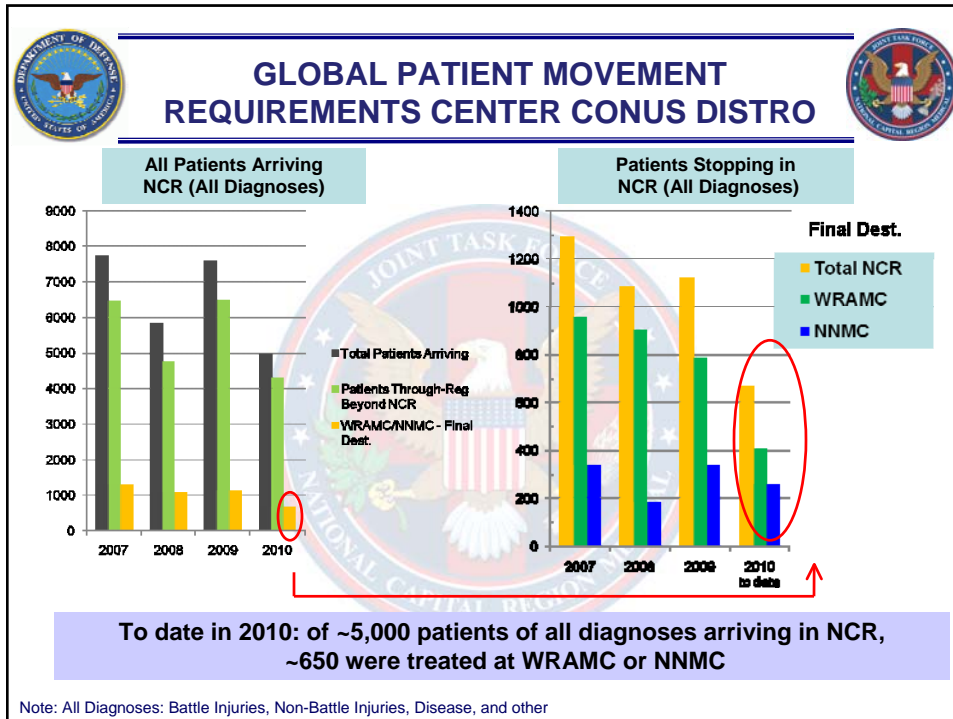
### WRAMC and NNMC





35





- ## ISSUE – NCR MEDICAL INTERAGENCY SUPPORT
- **JTF CAPMED** serves as functional medical component for JFHQ NCR coordinating multi-Service medical capabilities
    - Single point for command, control, and coordination
  - **ASD(Homeland Security)**
    - Briefed on plans and capabilities
    - Briefed Spec. Asst. to POTUS for Homeland Security (Hon. Richard Reed)
  - **Office of Management and Budget** attended the brief
  - **MD-VA-DC** interagency and civil authorities
    - JTF CAPMED hosts quarterly emergency meeting w/ NCR emergency responders
    - Has expanded from 30 to 120 participants in a year
  - **JFHQ-NCR CAPITAL SHIELD** (NCR Public/Private response exercise)
    - Largest medical contingency response exercise in the NCR
    - 30 Public/Private and 4 DoD hospitals will participate CY10; 400+ patients
    - Air and ground transportation



# JTF CapMed



**Questions?**